



Axis 2 - Design and develop an eLearning course / ADDIE model to design eLearning courses

ONLINEHE: A practical toolkit for integrating relearning in Higher Education Curricula

<https://onlinehe.eu/>



Co-funded by the
Erasmus+ Programme
of the European Union



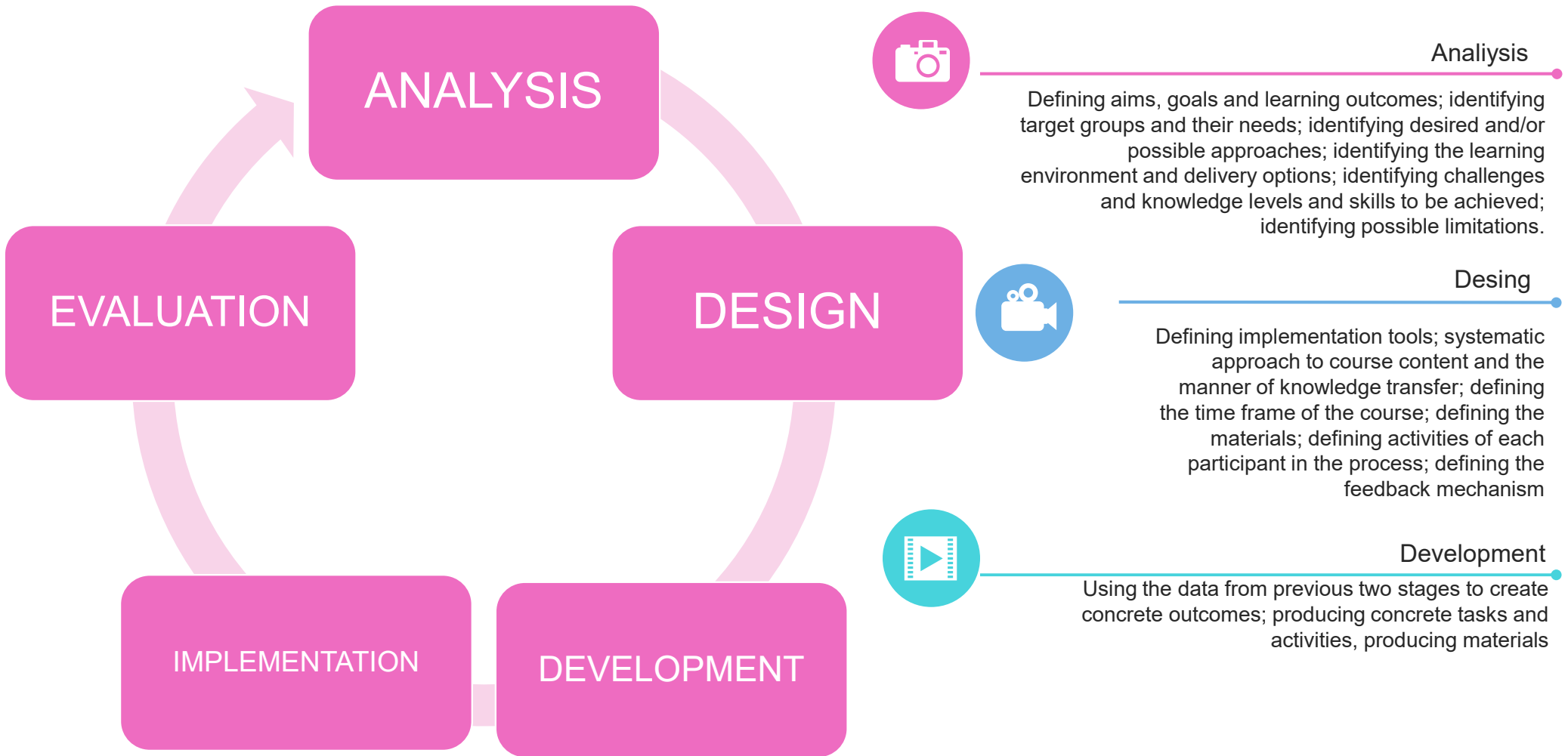
CONTENT

- 01 WHAT IS ADDIE?**
 - What does ADDIE mean?
 - Planning the steps
 - Planning approaches and methodology
- 02 ADDIE AND OTHER MODELS**
 - Course design – current practices
 - ADDIE and different models of course design: similarities and differences
- 03 AVAILABLE TOOLS**
 - Choosing the tools
 - Using the tools
- 04 WHAT DO YOU THINK?**
 - Discussion: experiences and practices
 - Discussion: opinions and recommendations

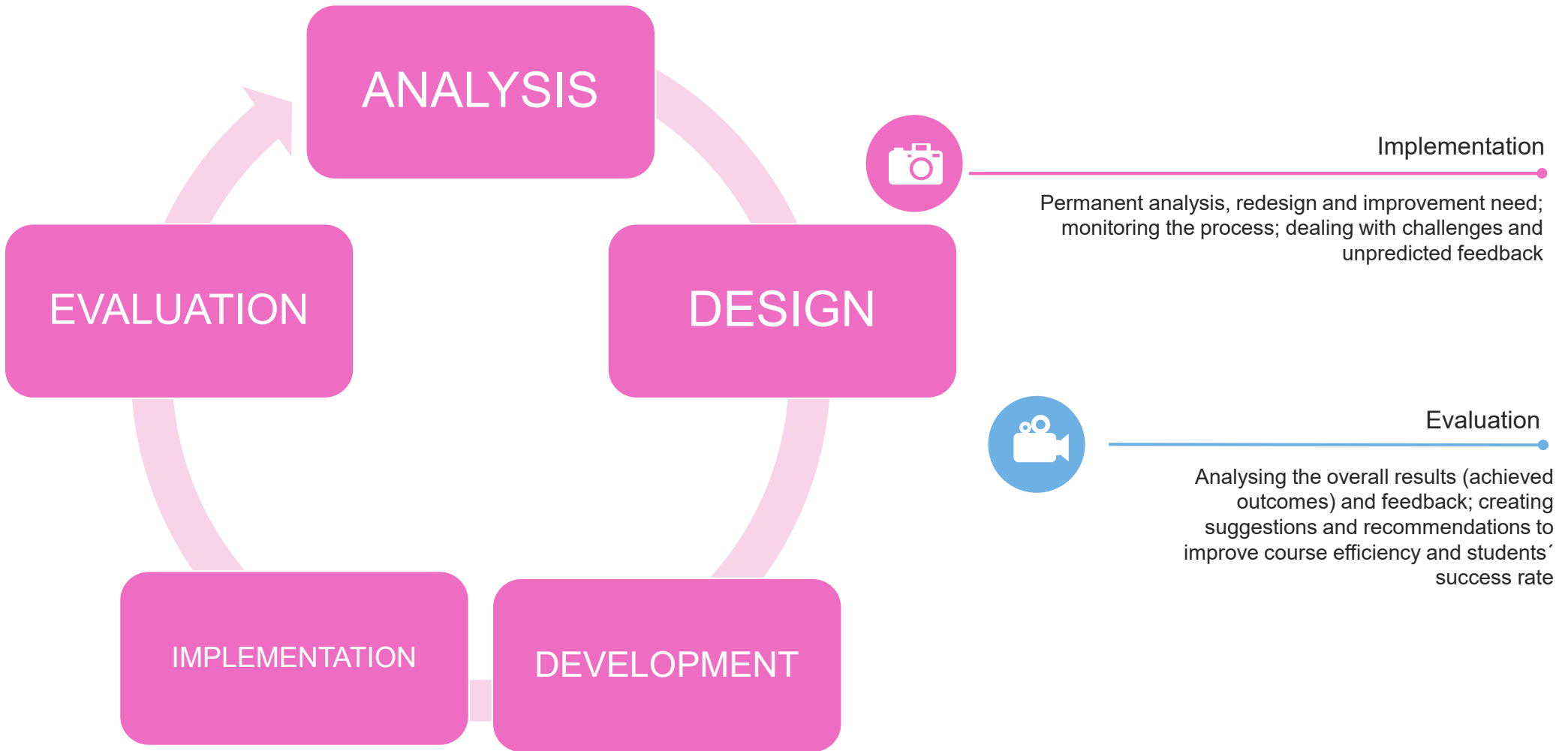


WHAT IS ADDIE?

WHAT IS ADDIE 1/2



WHAT IS ADDIE 2/2





**ADDIE AND OTHER
MODELS**

ADDIE AND OTHER MODELS



CURRENT PRACTICES

The most common practices in designing courses: how do you do it?



DIFFERENT MODELS

- Backward model
- Fink's integrated course design
- Kolb's experiential Learning Cycle
- Community of Inquiry (CoI) Framework
- Connection-Engagement-Empowerment (CEE)
- Purdue's Interactive Course Re/Design (ICD) Wheel:

LET US COMPARE

Similarities:

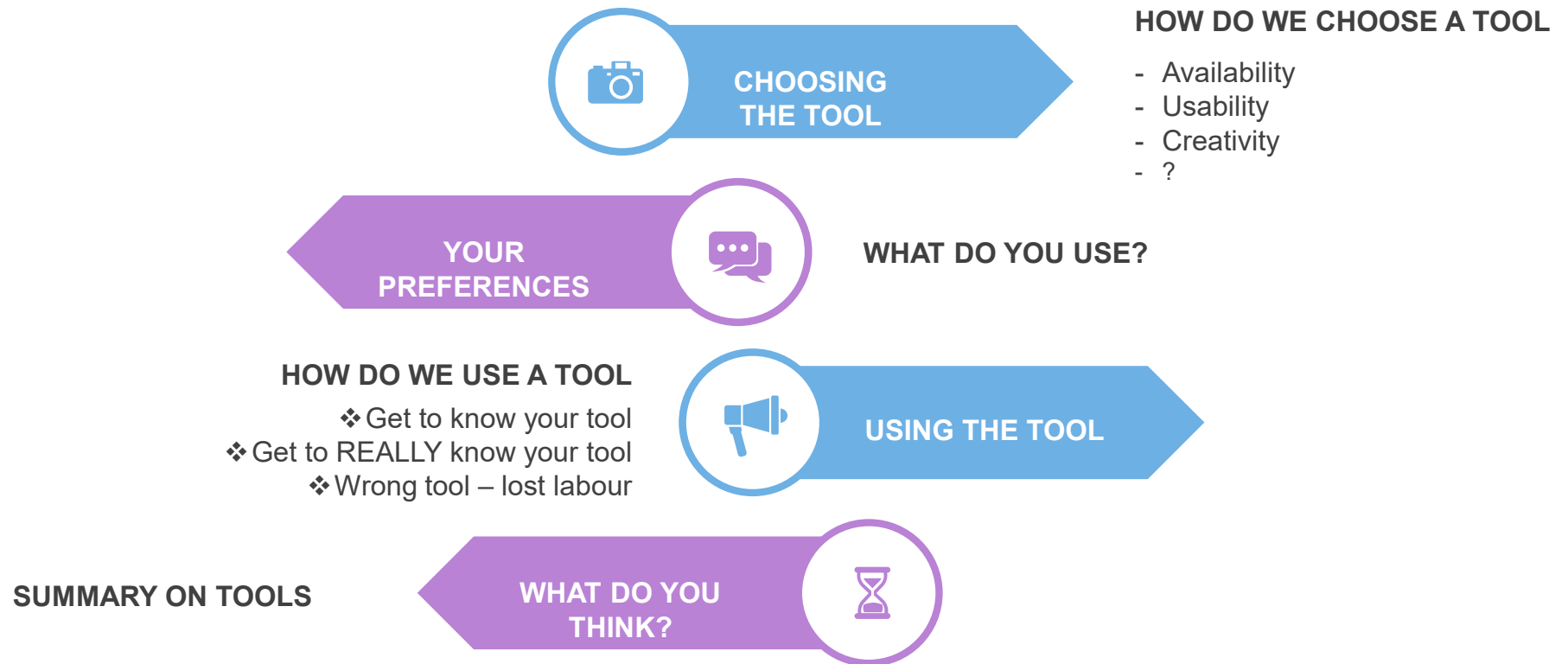
Differences:





AVAILABLE TOOLS

AVAILABLE TOOLS





WHAT DO YOU THINK?

WHAT DO YOU THINK? 1/2



**WHAT DO YOUR EXPERIENCE AND
PRACTICE TELL YOU?**



WHAT DO YOU THINK? 2/2



WHAT IS YOUR OPINION AND WHAT DO YOU RECOMMEND?





THANK YOU